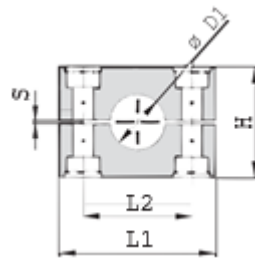
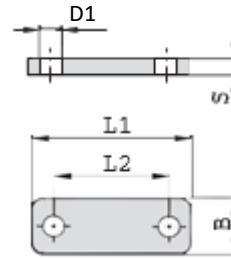


**G11 STANDARD SERIES DOUBLE/TRIPLE STACK LONG HEX BOLT AND NUT SET
(CLAMP BODY + COVER PLATE + LONG HEX BOLT AND NUT)**


Clamp Body



Cover Plate



Hex Bolt

Series	Order Code	D1 Pipe O.D.	Inch Bore	Inch O.D.	Clamp Body					Cover Plate			Long Hex Bolt
					L1	L2	H	S	B	L1	L2	S	
1	PC-S-**-9-1-006-*	6			28	9.5	27	0.4	30	28	9.5	3	M6 x 55
	PC-S-**-9-1-006.4-*	6.4		1/4									
	PC-S-**-9-1-008-*	8		5/16									
	PC-S-**-9-1-009.5-*	9.5		3/8									
	PC-S-**-9-1-010-*	10	1/8										
PC-S-**-9-1-012-*	12												
1A	PC-S-**-9-1A-006-*	6			37	20	27	0.4	30	34	20	3	M6 x 55
	PC-S-**-9-1A-006.4-*	6.4		1/4									
	PC-S-**-9-1A-008-*	8		5/16									
	PC-S-**-9-1A-009.5-*	9.5		3/8									
	PC-S-**-9-1A-010-*	10	1/8										
PC-S-**-9-1A-012-*	12												
2	PC-S-**-9-2-012.7-*	12.7		1/2	42	26	33	0.6	30	40.5	26	3	M6 x 55
	PC-S-**-9-2-013.5-*	13.5	1/4										
	PC-S-**-9-2-014-*	14											
	PC-S-**-9-2-015-*	15											
	PC-S-**-9-2-016-*	16		5/8									
	PC-S-**-9-2-017.2-*	17.2	3/8										
PC-S-**-9-2-018-*	18												
3	PC-S-**-9-3-019-*	19		3/4	50	33	36	0.6	30	48	33	3	M6 x 60
	PC-S-**-9-3-020-*	20											
	PC-S-**-9-3-021.3-*	21.3	1/2										
	PC-S-**-9-3-022-*	22		7/8									
	PC-S-**-9-3-025-*	25											
PC-S-**-9-3-025.4-*	25.4		1										
4	PC-S-**-9-4-026.9-*	26.9	3/4		59	40	42	0.6	30	57	40	3	M6 x 70
	PC-S-**-9-4-028-*	28											
	PC-S-**-9-4-030-*	30											
5	PC-S-**-9-5-032-*	32		1 1/4	71	52	58	0.8	30	70	52	3	M6x 80
	PC-S-**-9-5-033.7-*	33.7	1										
	PC-S-**-9-5-035-*	35											
	PC-S-**-9-5-038-*	38		1 1/2									
	PC-S-**-9-5-040-*	40											
PC-S-**-9-5-042-*	42	1 1/4											
6	PC-S-**-9-6-044.5-*	44.5		1 3/4	86	66	66	0.8	30	86	66	3	M6 x 100
	PC-S-**-9-6-048.3-*	48.3	1 1/2										
	PC-S-**-9-6-050.8-*	50.8		2									
7	PC-S-**-9-7-057.2-*	57.2		2 1/4	121	94	93	0.8	30	118	94	5	M6 x 125
	PC-S-**-9-7-060.3-*	60.3	2										
	PC-S-**-9-7-063.5-*	63.5		2 1/2									
	PC-S-**-9-7-070-*	70		2 3/4									
	PC-S-**-9-7-073-*	73											
PC-S-**-9-7-076.1-*	76.1	2 1/2	3										
8	PC-S-**-9-8-088.9-*	88.9	3	3 1/2	147	120	116	0.8	30	144	120	5	M6 x 140
	PC-S-**-9-8-102-*	102		4									