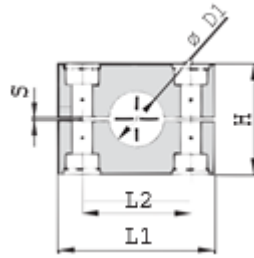
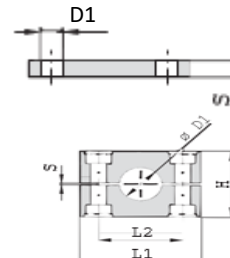


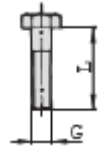
G4 HEAVY SERIES COVER PLATE ONLY SET (HEX BOLTS + COVER PLATE + CLAMP BODY)



Clamp Body



Cover Plate



Hex Bolt

Series	Order Code	D1 Pipe O.D.	Inch Bore	Inch O.D.	Clamp Body					Cover Plate					Bolt												
					L1	L2	H	S	B	L1	L2	S	B	D1													
3S	PC-H**-4-3S-006.*	6			55	33	30.5	0.6	30.5	55	33	8	30	11	M10 x 45												
	PC-H**-4-3S-006.4.*	6.4		1/4																							
	PC-H**-4-3S-008.*	8		5/16																							
	PC-H**-4-3S-009.5.*	9.5		3/8																							
	PC-H**-4-3S-010.*	10	1/8																								
	PC-H**-4-3S-012.*	12																									
	PC-H**-4-3S-012.7.*	12.7		1/2																							
	PC-H**-4-3S-013.5.*	13.5	1/4																								
	PC-H**-4-3S-014.*	14																									
	PC-H**-4-3S-015.*	15																									
	PC-H**-4-3S-016.*	16		5/8																							
	PC-H**-4-3S-017.2.*	17.2	3/8																								
PC-H**-4-3S-018.*	18																										
4S	PC-H**-4-4S-019.*	19		3/4	70	45	46.5	0.6	30.5	70	45	8	30	11	M10 x 60												
	PC-H**-4-4S-020.*	20																									
	PC-H**-4-4S-021.3.*	21.3	1/2																								
	PC-H**-4-4S-022.*	22		7/8																							
	PC-H**-4-4S-025.*	25																									
	PC-H**-4-4S-025.4.*	25.4		1																							
	PC-H**-4-4S-026.9.*	26.9	3/4																								
	PC-H**-4-4S-028.*	28																									
	PC-H**-4-4S-030.*	30																									
	PC-H**-4-5S-030.*	30																									
	PC-H**-4-5S-032.*	32		1 1/4																							
	PC-H**-4-5S-033.7.*	33.7	1																								
5S	PC-H**-4-5S-035.*	35			85	60	58	0.6	30.5	85	60	8	30	11	M10 x 70												
	PC-H**-4-5S-038.*	38		1 1/2																							
	PC-H**-4-5S-040.*	40																									
	PC-H**-4-5S-042.*	42	1 1/4																								
	6S	PC-H**-4-6S-038.*	38													1 1/2	115	90	87	2	45	115	90	10	45	14	M12 x 100
		PC-H**-4-6S-042.*	42	1 1/4																							
		PC-H**-4-6S-044.5.*	44.5													1 3/4											
		PC-H**-4-6S-048.3.*	48.3	1 1/2																							
		PC-H**-4-6S-050.8.*	50.8													2											
		PC-H**-4-6S-055.*	55																								
		PC-H**-4-6S-057.*	57													2 1/4											
		PC-H**-4-6S-060.3.*	60.3	2																							
PC-H**-4-6S-063.5.*		63.5		2 1/2																							
PC-H**-4-6S-065.*		65																									
PC-H**-4-6S-070.*		70		2 3/4																							
7S		PC-H**-4-7S-065.*	65			152	122	120	2	60	152	122	10	60	19	M16 x 130											
	PC-H**-4-7S-070.*	70																									
	PC-H**-4-7S-073.*	73		2 7/8																							
	PC-H**-4-7S-075.*	75																									
	PC-H**-4-7S-076.1.*	76.1	2 1/2	3																							
	PC-H**-4-7S-080.*	80																									
	PC-H**-4-7S-082.5.*	82.5		3 1/4																							
	PC-H**-4-7S-088.9.*	88.9	3	3 1/2																							
	8S	PC-H**-4-8S-088.9.*	88.9	3	3 1/2												206	168	168	2	80	206	168	15	80	22	M20 x 190
		PC-H**-4-8S-100.*	100																								
		PC-H**-4-8S-102.*	102	3 1/2																							
		PC-H**-4-8S-108.*	108		4 1/4																						
PC-H**-4-8S-114.*		114	4																								
PC-H**-4-8S-127.*		127		5																							
PC-H**-4-8S-133.*		133		5 1/4																							
9S		PC-H**-4-9S-133.*	133		5 1/4	251	205	200	3	91	251	205	15	90	26	M24 x 220											
		PC-H**-4-9S-140.*	140	5																							
		PC-H**-4-9S-152.*	152		6																						
		PC-H**-4-9S-159.*	159		6 1/4																						
		PC-H**-4-9S-165.*	165		6 1/2																						
	PC-H**-4-9S-168.*	168	6																								
10S	PC-H**-4-10S-168.*	168	6		326	265	270	3	120	320	265	25	120	35	M30 x 300												
	PC-H**-4-10S-177.8.*	177.8		7																							
	PC-H**-4-10S-193.7.*	193.7		7 5/8																							
	PC-H**-4-10S-216.*	216		8 1/2																							
	PC-H**-4-10S-219.*	219	8																								
11S	PC-H**-4-11S-219.*	219	8		470	395	410	8	162	470	395	30	160	35	M30 x 450												
	PC-H**-4-11S-273.*	273	10																								
	PC-H**-4-11S-324.*	324	12																								
12S	PC-H**-4-12S-356.*	356	14		630	534	530	20	182	630	534	30	180	35	M30 x 560												
	PC-H**-4-12S-406.*	406	16																								