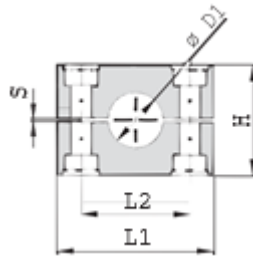
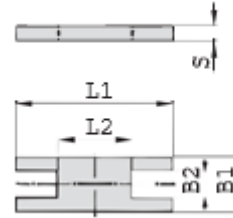


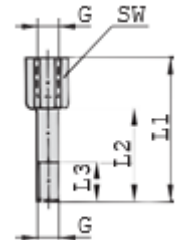
**G3 HEAVY SERIES DOUBLE STACK SET  
(STACKING BOLTS + SAFETY LOCKING PLATE + CLAMP BODY)**



Clamp Body



Safety Locking Plate



Stacking Bolt

Series	Order Code	D1 Pipe O.D.	Inch Bore	Inch O.D.	Clamp Body					Safety Locking Plate					Stacking Bolt					
					L1	L2	H	S	B	L1	L2	B1	B2	S	G	L1	L2	L3	SW	
3S	PC-H**-3-3S-006.*	6																		
	PC-H**-3-3S-006.4.*	6.4		1/4																
	PC-H**-3-3S-008.*	8		5/16																
	PC-H**-3-3S-009.5.*	9.5		3/8																
	PC-H**-3-3S-010.*	10	1/8																	
	PC-H**-3-3S-012.*	12																		
	PC-H**-3-3S-012.7.*	12.7		1/2		55	33	30.5	0.6	30.5	57	13	30	15.2	8	M10	49	25	15	15
	PC-H**-3-3S-013.5.*	13.5	1/4																	
	PC-H**-3-3S-014.*	14																		
	PC-H**-3-3S-015.*	15																		
	PC-H**-3-3S-016.*	16		5/8																
	PC-H**-3-3S-017.2.*	17.2	3/8																	
PC-H**-3-3S-018.*	18																			
4S	PC-H**-3-4S-019.*	19		3/4																
	PC-H**-3-4S-020.*	20																		
	PC-H**-3-4S-021.3.*	21.3	1/2																	
	PC-H**-3-4S-022.*	22		7/8																
	PC-H**-3-4S-025.*	25				70	45	46.5	0.6	30.5	70	26	30	15.2	8	M10	65	40	15	15
	PC-H**-3-4S-025.4.*	25.4		1																
	PC-H**-3-4S-026.9.*	26.9	3/4																	
	PC-H**-3-4S-028.*	28																		
	PC-H**-3-4S-030.*	30																		
	PC-H**-3-5S-030.*	30																		
5S	PC-H**-3-5S-032.*	32		1 1/4																
	PC-H**-3-5S-033.7.*	33.7	1																	
	PC-H**-3-5S-035.*	35				85	60	58	0.6	30.5	85	40	30	15.2	8	M10	77	51	15	15
	PC-H**-3-5S-038.*	38		1 1/2																
	PC-H**-3-5S-040.*	40																		
	PC-H**-3-5S-042.*	42	1 1/4																	
	6S	PC-H**-3-6S-038.*	38		1 1/2															
PC-H**-3-6S-042.*		42	1 1/4																	
PC-H**-3-6S-044.5.*		44.5		1 3/4																
PC-H**-3-6S-048.3.*		48.3	1 1/2																	
PC-H**-3-6S-050.8.*		50.8		2																
PC-H**-3-6S-055.*		55				115	90	87	2	45	116	68	45	17.2	10	M12	110	82	18	17
PC-H**-3-6S-057.*		57		2 1/4																
PC-H**-3-6S-060.3.*		60.3	2																	
PC-H**-3-6S-063.5.*		63.5		2 1/2																
PC-H**-3-6S-065.*		65																		
PC-H**-3-6S-070.*		70		2 3/4																
7S		PC-H**-3-7S-065.*	65																	
	PC-H**-3-7S-070.*	70																		
	PC-H**-3-7S-073.*	73		2 7/8																
	PC-H**-3-7S-075.*	75				152	122	120	2	60	153	96	60	22	10	M16	144	110	24	21
	PC-H**-3-7S-076.1.*	76.1	2 1/2	3																
	PC-H**-3-7S-080.*	80																		
	PC-H**-3-7S-082.5.*	82.5		3 1/4																
	PC-H**-3-7S-088.9.*	88.9	3	3 1/2																
	PC-H**-3-8S-088.9.*	88.9	3	3 1/2																
	PC-H**-3-8S-100.*	100																		
8S	PC-H**-3-8S-102.*	102	3 1/2																	
	PC-H**-3-8S-108.*	108		4 1/4																
	PC-H**-3-8S-114.*	114	4			206	168	168	2	80	206	130	80	28	15	M20	200	150	30	27
	PC-H**-3-8S-127.*	127		5																
	PC-H**-3-8S-133.*	133		5 1/4																
	PC-H**-3-9S-133.*	133		5 1/4																
	PC-H**-3-9S-140.*	140	5																	
9S	PC-H**-3-9S-152.*	152		6																
	PC-H**-3-9S-159.*	159		6 1/4																
	PC-H**-3-9S-165.*	165		6 1/2		251	205	200	3	91	251	166	90	31	15	M24	240	180	50	30
	PC-H**-3-9S-168.*	168	6																	
10S	PC-H**-3-10S-168.*	168	6																	
	PC-H**-3-10S-177.8.*	177.8		7																
	PC-H**-3-10S-193.7.*	193.7		7 5/8																
	PC-H**-3-10S-216.*	216		8 1/2		326	265	270	3	120	317	205	120	49	25	M30	331	256	62	46
	PC-H**-3-10S-219.*	219	8																	