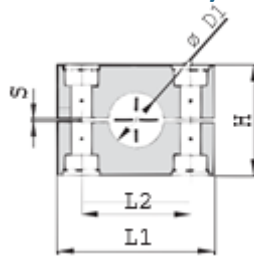
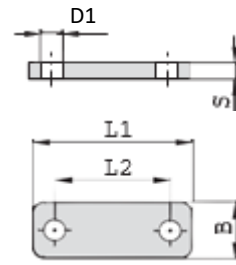
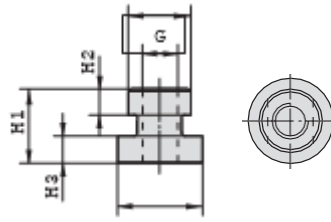
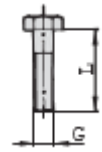


**G2 HEAVY SERIES COVER PLATE WITH RAIL NUT SET
(HEX BOLTS + COVER PLATE + CLAMP BODY + RAIL NUTS)**

Clamp Body

Cover Plate

Series	Order Code	D1 Pipe O.D.	Inch Bore	Inch O.D.	Clamp Body					Cover Plate					
					L1	L2	H	S	B	L1	L2	S	B	D1	
3S	PC-H**-2-3S-006.*	6													
	PC-H**-2-3S-006.4.*	6.4		1/4											
	PC-H**-2-3S-008.*	8		5/16											
	PC-H**-2-3S-009.5.*	9.5		3/8											
	PC-H**-2-3S-010.*	10	1/8												
	PC-H**-2-3S-012.*	12													
	PC-H**-2-3S-012.7.*	12.7		1/2		55	33	30.5	0.6	30.5	55	33	8	30	11
	PC-H**-2-3S-013.5.*	13.5	1/4												
	PC-H**-2-3S-014.*	14													
	PC-H**-2-3S-015.*	15													
	PC-H**-2-3S-016.*	16		5/8											
	PC-H**-2-3S-017.2.*	17.2	3/8												
PC-H**-2-3S-018.*	18														
PC-H**-2-4S-019.*	19		3/4												
PC-H**-2-4S-020.*	20														
PC-H**-2-4S-021.3.*	21.3	1/2													
PC-H**-2-4S-022.*	22		7/8												
PC-H**-2-4S-025.*	25				70	45	46.5	0.6	30.5	70	45	8	30	11	
PC-H**-2-4S-025.4.*	25.4		1												
PC-H**-2-4S-026.9.*	26.9	3/4													
PC-H**-2-4S-028.*	28														
PC-H**-2-4S-030.*	30														
PC-H**-2-5S-030.*	30														
PC-H**-2-5S-032.*	32		1 1/4												
PC-H**-2-5S-033.7.*	33.7	1													
PC-H**-2-5S-035.*	35				85	60	58	0.6	30.5	85	60	8	30	11	
PC-H**-2-5S-038.*	38		1 1/2												
PC-H**-2-5S-040.*	40														
PC-H**-2-5S-042.*	42	1 1/4													
PC-H**-2-6S-038.*	38		1 1/2												
PC-H**-2-6S-042.*	42	1 1/4													
PC-H**-2-6S-044.5.*	44.5		1 3/4												
PC-H**-2-6S-048.3.*	48.3	1 1/2													
PC-H**-2-6S-050.8.*	50.8		2												
PC-H**-2-6S-055.*	55				115	90	87	2	45	115	90	10	45	14	
PC-H**-2-6S-057.*	57		2 1/4												
PC-H**-2-6S-060.3.*	60.3	2													
PC-H**-2-6S-063.5.*	63.5		2 1/2												
PC-H**-2-6S-065.*	65														
PC-H**-2-6S-070.*	70		2 3/4												
PC-H**-2-7S-065.*	65														
PC-H**-2-7S-070.*	70														
PC-H**-2-7S-073.*	73		2 7/8												
PC-H**-2-7S-075.*	75														
PC-H**-2-7S-076.1.*	76.1	2 1/2	3		152	122	120	2	60	152	122	10	60	19	
PC-H**-2-7S-080.*	80														
PC-H**-2-7S-082.5.*	82.5		3 1/4												
PC-H**-2-7S-088.9.*	88.9	3	3 1/2												
PC-H**-2-8S-088.9.*	88.9	3	3 1/2												
PC-H**-2-8S-100.*	100														
PC-H**-2-8S-102.*	102	3 1/2													
PC-H**-2-8S-108.*	108		4 1/4		206	168	168	2	80	206	168	15	80	22	
PC-H**-2-8S-114.*	114	4													
PC-H**-2-8S-127.*	127		5												
PC-H**-2-8S-133.*	133		5 1/4												
PC-H**-2-9S-133.*	133		5 1/4												
PC-H**-2-9S-140.*	140	5													
PC-H**-2-9S-152.*	152		6												
PC-H**-2-9S-159.*	159		6 1/4		251	205	200	3	91	251	205	15	90	26	
PC-H**-2-9S-165.*	165		6 1/2												
PC-H**-2-9S-168.*	168	6													
PC-H**-2-10S-168.*	168	6													
PC-H**-2-10S-177.8.*	177.8		7												
PC-H**-2-10S-193.7.*	193.7		7 5/8		326	265	270	3	120	320	265	25	120	35	
PC-H**-2-10S-216.*	216		8 1/2												
PC-H**-2-10S-219.*	219	8													
PC-H**-2-11S-219.*	219	8													
PC-H**-2-11S-273.*	273	10			470	395	410	8	162	470	395	30	160	35	
PC-H**-2-11S-324.*	324	12													
PC-H**-2-12S-356.*	356	14													
PC-H**-2-12S-406.*	406	16			630	534	530	20	182	630	534	30	180	35	

**G2 HEAVY SERIES COVER PLATE WITH RAIL NUT SET
(HEX BOLTS + COVER PLATE + CLAMP BODY + RAIL NUTS)**

Rail Nut

Hex Bolt

Series	Order Code	D1 Pipe O.D.	Inch Bore	Inch O.D.	Mounting Rail Nut				Hexagon Bolt
					H1	H2	H3	Thread G	Hexagon Bolt
35	PC-H**-2-3S-006.*	6			21	7,6	7,4	M10	M10 x 45
	PC-H**-2-3S-006.4.*	6.4		1/4					
	PC-H**-2-3S-008.*	8		5/16					
	PC-H**-2-3S-009.5.*	9.5		3/8					
	PC-H**-2-3S-010.*	10	1/8						
	PC-H**-2-3S-012.*	12							
	PC-H**-2-3S-012.7.*	12.7		1/2					
	PC-H**-2-3S-013.5.*	13.5	1/4						
	PC-H**-2-3S-014.*	14							
	PC-H**-2-3S-015.*	15							
	PC-H**-2-3S-016.*	16		5/8					
	PC-H**-2-3S-017.2.*	17.2	3/8						
PC-H**-2-3S-018.*	18								
PC-H**-2-4S-019.*	19		3/4						
45	PC-H**-2-4S-020.*	20			.83	.30	.29	M10	M10 x 60
	PC-H**-2-4S-021.3.*	21.3	1/2						
	PC-H**-2-4S-022.*	22		7/8					
	PC-H**-2-4S-025.*	25							
	PC-H**-2-4S-025.4.*	25.4		1					
	PC-H**-2-4S-026.9.*	26.9	3/4						
	PC-H**-2-4S-028.*	28							
	PC-H**-2-4S-030.*	30							
	PC-H**-2-5S-030.*	30							
	PC-H**-2-5S-032.*	32		1 1/4					
55	PC-H**-2-5S-033.7.*	33.7	1		23	8,8	8,8	M12	M12 x 100
	PC-H**-2-5S-035.*	35							
	PC-H**-2-5S-038.*	38		1 1/2					
	PC-H**-2-5S-040.*	40							
	PC-H**-2-5S-042.*	42	1 1/4						
	PC-H**-2-6S-038.*	38		1 1/2					
	PC-H**-2-6S-042.*	42	1 1/4						
	PC-H**-2-6S-044.5.*	44.5		1 3/4					
	PC-H**-2-6S-048.3.*	48.3	1 1/2						
	PC-H**-2-6S-050.8.*	50.8		2					
65	PC-H**-2-6S-055.*	55			-	-	-	-	M16 x 130
	PC-H**-2-6S-057.*	57		2 1/4					
	PC-H**-2-6S-060.3.*	60.3	2						
	PC-H**-2-6S-063.5.*	63.5		2 1/2					
	PC-H**-2-6S-065.*	65							
	PC-H**-2-6S-070.*	70		2 3/4					
	PC-H**-2-7S-065.*	65							
	PC-H**-2-7S-070.*	70							
	PC-H**-2-7S-073.*	73		2 7/8					
	PC-H**-2-7S-075.*	75							
75	PC-H**-2-7S-076.1.*	76.1	2 1/2	3	-	-	-	-	M20 x 190
	PC-H**-2-7S-080.*	80							
	PC-H**-2-7S-082.5.*	82.5		3 1/4					
	PC-H**-2-7S-088.9.*	88.9	3	3 1/2					
	PC-H**-2-8S-088.9.*	88.9	3	3 1/2					
	PC-H**-2-8S-100.*	100							
85	PC-H**-2-8S-102.*	102	3 1/2		-	-	-	-	M24 x 220t
	PC-H**-2-8S-108.*	108		4 1/4					
	PC-H**-2-8S-114.*	114	4						
	PC-H**-2-8S-127.*	127		5					
	PC-H**-2-8S-133.*	133		5 1/4					
	PC-H**-2-9S-133.*	133		5 1/4					
95	PC-H**-2-9S-140.*	140	5		-	-	-	-	M30 x 300t
	PC-H**-2-9S-152.*	152		6					
	PC-H**-2-9S-159.*	159		6 1/4					
	PC-H**-2-9S-165.*	165		6 1/2					
	PC-H**-2-9S-168.*	168	6						
	PC-H**-2-10S-168.*	168	6						
105	PC-H**-2-10S-177.8.*	177.8		7	-	-	-	-	M30 x 450
	PC-H**-2-10S-193.7.*	193.7		7 5/8					
	PC-H**-2-10S-216.*	216		8 1/2					
	PC-H**-2-10S-219.*	219	8						
115	PC-H**-2-11S-219.*	219	8		-	-	-	-	M30 x 560
	PC-H**-2-11S-273.*	273		10					
125	PC-H**-2-11S-324.*	324	12		-	-	-	-	M30 x 560
	PC-H**-2-12S-356.*	356	14						
	PC-H**-2-12S-406.*	406	16		-	-	-	-	M30 x 560