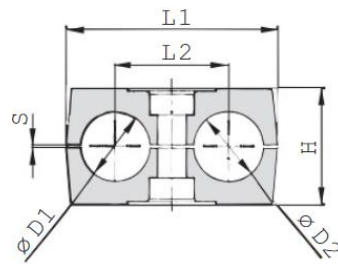
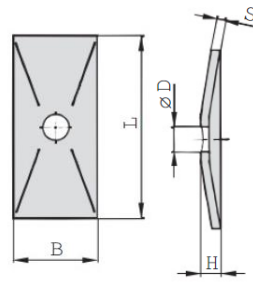
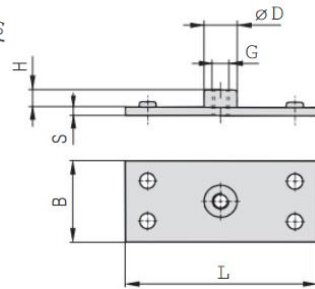
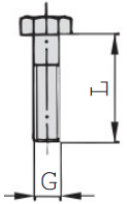


**G1 TWIN SERIES COMPLETE SET (HEX BOLT + COVER PLATE + CLAMP BODY + WELD PLATE)**

**Clamp Body**

**Cover Plate**

**Weld Plate**

**Hex Bolt**

Series	Order Code	D1/D2 Pipe O.D.	Inch Bore	Inch O.D.	Clamp Body					Cover Plate					Weld Plate						Bolt
					L1	L2	H	S	B	L	B	H	S	D	L	B	S	H	D	G	
1D	PC-T**-1-1D-006.*	6/6			36	20	26.5	0.6	30	34	30	7	3	7	37	30	3	6.5	12	M6	M6 x 35
	PC-T**-1-1D-006.4.*	6.4/6.4		1/4																	
	PC-T**-1-1D-008.*	8/8		5/16																	
	PC-T**-1-1D-009.5.*	9.5/9.5		3/8																	
	PC-T**-1-1D-010.*	10/10	1/8																		
	PC-T**-1-1D-012.*	12/12																			
2D	PC-T**-1-2D-012.7.*	12.7/12.7		1/2	53	29	26.5	0.7	30	52	30	7	3	9	55	30	5	6	14	M8	M8 x 35
	PC-T**-1-2D-013.5.*	13.5/13.5	1/4																		
	PC-T**-1-2D-014.*	14/14																			
	PC-T**-1-2D-015.*	15/15																			
	PC-T**-1-2D-016.*	16/16	5/8																		
	PC-T**-1-2D-017.2.*	17.2/17.2	3/8																		
PC-T**-1-2D-018.*	18/18																				
3D	PC-T**-1-3D-019.*	19/19		3/4	67	36	36.5	0.7	30	65	30	7	3	9	70	30	5	6	14	M8	M8 x 45
	PC-T**-1-3D-020.*	20/20																			
	PC-T**-1-3D-021.3.*	21.3/21.3	1/2																		
	PC-T**-1-3D-022.*	22/22	7/8																		
	PC-T**-1-3D-025.*	25/25																			
	PC-T**-1-3D-025.4.*	25.4/25.4	1																		
4D	PC-T**-1-4D-026.9.*	26.9/26.9	3/4		80	45	38	0.7	30	79	30	7	3	9	85	30	5	6	14	M8	M8 x 50
	PC-T**-1-4D-028.*	28/28																			
	PC-T**-1-4D-030.*	30/30																			
5D	PC-T**-1-5D-032.*	32/32			106	56	52	0.7	30	102	30	7	3	9	110	30	5	6	14	M8	M8 x 60
	PC-T**-1-5D-033.7.*	33.7/33.7																			
	PC-T**-1-5D-035.*	35/35																			
	PC-T**-1-5D-038.*	38/38																			
	PC-T**-1-5D-040.*	40/40																			
	PC-T**-1-5D-042.*	42/42																			