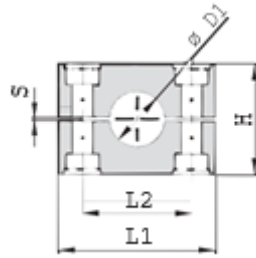
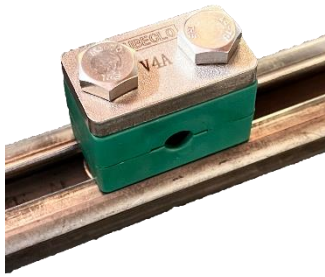
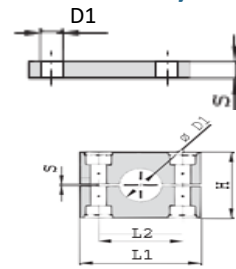


**G8 HEAVY SERIES COVER PLATE WITH MOUNTING RAIL AND HEX BOLT COMPLETE SET
(CLAMP BODY + COVER PLATE + MOUNTING RAIL + MOUNTING RAIL NUT + HEX BOLT)**



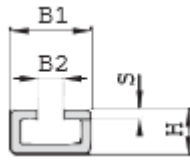
Clamp Body



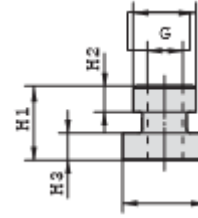
Cover Plate

Series	Order Code	D1 Pipe O.D.	Inch Bore	Inch O.D.	Clamp Body					Cover Plate				
					L1	L2	H	S	B	L1	L2	S	B	D1
3S	PC-H**-8-3S-006.*	6			55	33	30.5	0.6	30.5	55	33	8	30	11
	PC-H**-8-3S-006.4.*	6.4		1/4										
	PC-H**-8-3S-008.*	8		5/16										
	PC-H**-8-3S-009.5.*	9.5		3/8										
	PC-H**-8-3S-010.*	10		1/8										
	PC-H**-8-3S-012.*	12												
	PC-H**-8-3S-012.7.*	12.7		1/2										
	PC-H**-8-3S-013.5.*	13.5		1/4										
	PC-H**-8-3S-014.*	14												
	PC-H**-8-3S-015.*	15												
PC-H**-8-3S-016.*	16		5/8											
PC-H**-8-3S-017.2.*	17.2		3/8											
PC-H**-8-3S-018.*	18													
PC-H**-8-4S-019.*	19		3/4											
PC-H**-8-4S-020.*	20													
PC-H**-8-4S-021.3.*	21.3		1/2											
PC-H**-8-4S-022.*	22		7/8											
PC-H**-8-4S-025.*	25													
PC-H**-8-4S-025.4.*	25.4		1											
PC-H**-8-4S-026.9.*	26.9		3/4											
PC-H**-8-4S-028.*	28													
PC-H**-8-4S-030.*	30													
PC-H**-8-5S-030.*	30													
PC-H**-8-5S-032.*	32		1 1/4											
PC-H**-8-5S-033.7.*	33.7		1											
PC-H**-8-5S-035.*	35													
PC-H**-8-5S-038.*	38		1 1/2											
PC-H**-8-5S-040.*	40													
PC-H**-8-5S-042.*	42		1 1/4											
PC-H**-8-6S-038.*	38		1 1/2											
PC-H**-8-6S-042.*	42		1 1/4											
PC-H**-8-6S-044.5.*	44.5		1 3/4											
PC-H**-8-6S-048.3.*	48.3		1 1/2											
PC-H**-8-6S-050.8.*	50.8		2											
PC-H**-8-6S-055.*	55													
PC-H**-8-6S-057.*	57		2 1/4											
PC-H**-8-6S-060.3.*	60.3		2											
PC-H**-8-6S-063.5.*	63.5		2 1/2											
PC-H**-8-6S-065.*	65													
PC-H**-8-6S-070.*	70		2 3/4											
PC-H**-8-7S-065.*	65													
PC-H**-8-7S-070.*	70													
PC-H**-8-7S-073.*	73		2 7/8											
PC-H**-8-7S-075.*	75													
PC-H**-8-7S-076.1.*	76.1		2 1/2											
PC-H**-8-7S-080.*	80		3											
PC-H**-8-7S-082.5.*	82.5		3 1/4											
PC-H**-8-7S-088.9.*	88.9		3											
PC-H**-8-8S-088.9.*	88.9		3 1/2											
PC-H**-8-8S-100.*	100													
PC-H**-8-8S-102.*	102		3 1/2											
PC-H**-8-8S-108.*	108		4 1/4											
PC-H**-8-8S-114.*	114		4											
PC-H**-8-8S-127.*	127		5											
PC-H**-8-8S-133.*	133		5 1/4											
PC-H**-8-9S-133.*	133		5 1/4											
PC-H**-8-9S-140.*	140		5											
PC-H**-8-9S-152.*	152		6											
PC-H**-8-9S-159.*	159		6 1/4											
PC-H**-8-9S-165.*	165		6 1/2											
PC-H**-8-9S-168.*	168		6											
PC-H**-8-10S-168.*	168		6											
PC-H**-8-10S-177.8.*	177.8		7											
PC-H**-8-10S-193.7.*	193.7		7 5/8											
PC-H**-8-10S-216.*	216		8 1/2											
PC-H**-8-10S-219.*	219		8											
PC-H**-8-11S-219.*	219		8											
PC-H**-8-11S-273.*	273		10											
PC-H**-8-11S-324.*	324		12											
PC-H**-8-12S-356.*	356		14											
PC-H**-8-12S-406.*	406		16											

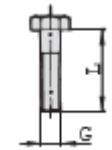
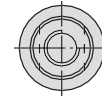
**G8 HEAVY SERIES COVER PLATE WITH MOUNTING RAIL AND HEX BOLT COMPLETE SET
(CLAMP BODY + COVER PLATE + MOUNTING RAIL + MOUNTING RAIL NUT + HEX BOLT)**



Mounting Rail



Rail Nut



Hex Bolt

Series	Order Code	D1 Pipe O.D.	Inch Bore	Inch O.D.	Mounting Rail				Rail Nut				Hex Bolt
					B1	B2	H	S	H1	H2	H3	Thread G	
3S	PC-H**-8-3S-006-*	6			40	13	22	5	21	7,6	7,4	M10	M10 x 45
	PC-H**-8-3S-006.4-*	6.4		1/4									
	PC-H**-8-3S-008-*	8		5/16									
	PC-H**-8-3S-009.5-*	9.5		3/8									
	PC-H**-8-3S-010-*	10	1/8										
	PC-H**-8-3S-012-*	12											
	PC-H**-8-3S-012.7-*	12.7		1/2									
	PC-H**-8-3S-013.5-*	13.5	1/4										
	PC-H**-8-3S-014-*	14											
	PC-H**-8-3S-015-*	15											
4S	PC-H**-8-3S-016-*	16		5/8	40	13	22	5	21	7,6	7,4	M10	M10 x 45
	PC-H**-8-3S-017.2-*	17.2	3/8										
	PC-H**-8-3S-018-*	18											
	PC-H**-8-4S-019-*	19		3/4									
	PC-H**-8-4S-020-*	20											
	PC-H**-8-4S-021.3-*	21.3	1/2										
	PC-H**-8-4S-022-*	22		7/8									
	PC-H**-8-4S-025-*	25											
5S	PC-H**-8-4S-025.4-*	25.4		1	1.57	.51	.86	.19	.83	.30	.29	M12	M12 x 100
	PC-H**-8-4S-026.9-*	26.9	3/4										
	PC-H**-8-4S-028-*	28											
	PC-H**-8-4S-030-*	30											
	PC-H**-8-5S-030-*	30											
	PC-H**-8-5S-032-*	32	1 1/4										
	PC-H**-8-5S-033.7-*	33.7	1										
	PC-H**-8-5S-035-*	35											
6S	PC-H**-8-5S-038-*	38		1 1/2	1.57	.51	.86	.19	.83	.30	.29	M12	M12 x 100
	PC-H**-8-5S-040-*	40											
	PC-H**-8-5S-042-*	42	1 1/4										
	PC-H**-8-6S-038-*	38		1 1/2									
	PC-H**-8-6S-042-*	42	1 1/4										
	PC-H**-8-6S-044.5-*	44.5		1 3/4									
	PC-H**-8-6S-048.3-*	48.3	1 1/2										
	PC-H**-8-6S-050.8-*	50.8		2									
	PC-H**-8-6S-055-*	55											
	PC-H**-8-6S-057-*	57		2 1/4									
7S	PC-H**-8-6S-060.3-*	60.3	2		-	-	-	-	-	-	-	-	M16 x 130
	PC-H**-8-6S-063.5-*	63.5		2 1/2									
	PC-H**-8-6S-065-*	65											
	PC-H**-8-6S-070-*	70	2 3/4										
	PC-H**-8-7S-065-*	65											
	PC-H**-8-7S-070-*	70											
	PC-H**-8-7S-073-*	73		2 7/8									
	PC-H**-8-7S-075-*	75											
8S	PC-H**-8-7S-076.1-*	76.1	2 1/2	3	-	-	-	-	-	-	-	-	M20 x 190
	PC-H**-8-7S-080-*	80											
	PC-H**-8-7S-082.5-*	82.5		3 1/4									
	PC-H**-8-7S-088.9-*	88.9	3	3 1/2									
	PC-H**-8-8S-088.9-*	88.9	3	3 1/2									
	PC-H**-8-8S-100-*	100											
	PC-H**-8-8S-102-*	102	3 1/2										
	PC-H**-8-8S-108-*	108		4 1/4									
9S	PC-H**-8-8S-114-*	114	4		-	-	-	-	-	-	-	-	M24 X 220
	PC-H**-8-8S-127-*	127		5									
	PC-H**-8-8S-133-*	133		5 1/4									
	PC-H**-8-9S-133-*	133		5 1/4									
	PC-H**-8-9S-140-*	140	5										
	PC-H**-8-9S-152-*	152		6									
10S	PC-H**-8-9S-159-*	159		6 1/4	-	-	-	-	-	-	-	-	M30 X 300
	PC-H**-8-9S-165-*	165		6 1/2									
	PC-H**-8-9S-168-*	168	6										
	PC-H**-8-10S-168-*	168	6										
11S	PC-H**-8-10S-177.8-*	177.8		7	-	-	-	-	-	-	-	-	M30 X 450
	PC-H**-8-10S-193.7-*	193.7		7 5/8									
	PC-H**-8-10S-216-*	216		8 1/2									
12S	PC-H**-8-10S-219-*	219	8		-	-	-	-	-	-	-	-	M30 X 560
	PC-H**-8-11S-219-*	219	8										
	PC-H**-8-11S-273-*	273	10		-	-	-	-	-	-	-	-	M30 X 560
	PC-H**-8-11S-324-*	324	12										
	PC-H**-8-12S-356-*	356	14		-	-	-	-	-	-	-	-	M30 X 560
	PC-H**-8-12S-406-*	406	16										