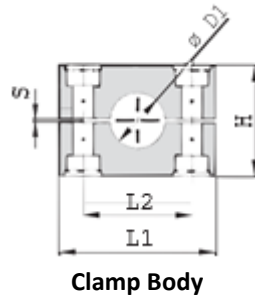
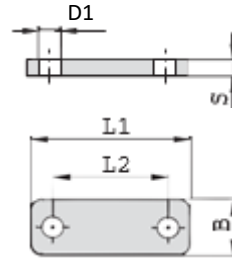
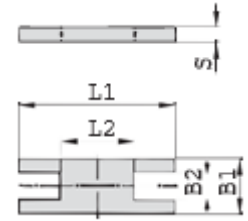
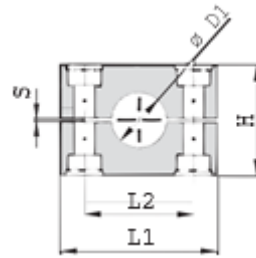


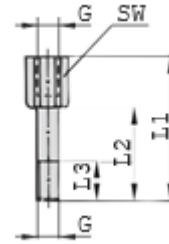
**G9 HEAVY SERIES DOUBLE/ TRIPLE STACK COMPLETE SET (2/3 SETS IN A VERTICAL ROW)
 (CLAMP BODY + COVER PLATE + BASE PLATE + LOCKING PLATE + STACKING BOLT + HEX BOLT)**

Clamp Body

Cover Plate

Safety Locking Plate

Series	Order Code	D1 Pipe O.D.	Inch Bore	Inch O.D.	Clamp Body					Cover Plate					Locking Plate					
					L1	L2	H	S	B	L1	L2	S	B	D1	L1	L2	B1	B2	S	
35	PC-H**-9-3S-006.*	6																		
	PC-H**-9-3S-006.4.*	6.4		1/4																
	PC-H**-9-3S-008.*	8		5/16																
	PC-H**-9-3S-009.5.*	9.5		3/8																
	PC-H**-9-3S-010.*	10	1/8																	
	PC-H**-9-3S-012.*	12																		
	PC-H**-9-3S-012.7.*	12.7		1/2		55	33	30.5	0.6	30.5	55	33	8	30	11	57	13	30	15.2	8
	PC-H**-9-3S-013.5.*	13.5	1/4																	
	PC-H**-9-3S-014.*	14																		
	PC-H**-9-3S-015.*	15																		
	PC-H**-9-3S-016.*	16		5/8																
	PC-H**-9-3S-017.2.*	17.2	3/8																	
PC-H**-9-3S-018.*	18																			
PC-H**-9-4S-019.*	19		3/4																	
PC-H**-9-4S-020.*	20																			
PC-H**-9-4S-021.3.*	21.3	1/2																		
PC-H**-9-4S-022.*	22		7/8																	
PC-H**-9-4S-025.*	25																			
PC-H**-9-4S-025.4.*	25.4		1																	
PC-H**-9-4S-026.9.*	26.9	3/4																		
PC-H**-9-4S-028.*	28																			
PC-H**-9-4S-030.*	30																			
PC-H**-9-5S-030.*	30																			
PC-H**-9-5S-032.*	32		1 1/4																	
PC-H**-9-5S-033.7.*	33.7	1																		
PC-H**-9-5S-035.*	35																			
PC-H**-9-5S-038.*	38		1 1/2																	
PC-H**-9-5S-040.*	40																			
PC-H**-9-5S-042.*	42	1 1/4																		
PC-H**-9-6S-038.*	38		1 1/2																	
PC-H**-9-6S-042.*	42	1 1/4																		
PC-H**-9-6S-044.5.*	44.5		1 3/4																	
PC-H**-9-6S-048.3.*	48.3	1 1/2																		
PC-H**-9-6S-050.8.*	50.8		2																	
PC-H**-9-6S-055.*	55																			
PC-H**-9-6S-057.*	57		2 1/4																	
PC-H**-9-6S-060.3.*	60.3	2																		
PC-H**-9-6S-063.5.*	63.5		2 1/2																	
PC-H**-9-6S-065.*	65																			
PC-H**-9-6S-070.*	70		2 3/4																	
PC-H**-9-7S-065.*	65																			
PC-H**-9-7S-070.*	70																			
PC-H**-9-7S-073.*	73		2 7/8																	
PC-H**-9-7S-075.*	75																			
PC-H**-9-7S-076.1.*	76.1	2 1/2	3																	
PC-H**-9-7S-080.*	80																			
PC-H**-9-7S-082.5.*	82.5		3 1/4																	
PC-H**-9-7S-088.9.*	88.9	3	3 1/2																	
PC-H**-9-8S-088.9.*	88.9	3	3 1/2																	
PC-H**-9-8S-100.*	100																			
PC-H**-9-8S-102.*	102	3 1/2																		
PC-H**-9-8S-108.*	108		4 1/4																	
PC-H**-9-8S-114.*	114	4																		
PC-H**-9-8S-127.*	127		5																	
PC-H**-9-8S-133.*	133		5 1/4																	
PC-H**-9-9S-133.*	133		5 1/4																	
PC-H**-9-9S-140.*	140	5																		
PC-H**-9-9S-152.*	152		6																	
PC-H**-9-9S-159.*	159		6 1/4																	
PC-H**-9-9S-165.*	165		6 1/2																	
PC-H**-9-9S-168.*	168	6																		
PC-H**-9-10S-168.*	168	6																		
PC-H**-9-10S-177.8.*	177.8		7																	
PC-H**-9-10S-193.7.*	193.7		7 5/8																	
PC-H**-9-10S-216.*	216		8 1/2																	
PC-H**-9-10S-219.*	219	8																		

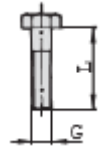
**G9 HEAVY SERIES DOUBLE/ TRIPLE STACK COMPLETE SET (2/3 SETS IN A VERTICAL ROW)
(CLAMP BODY + COVER PLATE + BASE PLATE + LOCKING PLATE + STACKING BOLT + HEX BOLT)**



Clamp Body



Stacking Bolt



Hex Bolt

Series	Order Code	D1 Pipe O.D.	Inch Bore	Inch O.D.	Clamp Body						Stacking Bolt				Bolt		
					L1	L2	B	S	H	G	D1	G	L1	L2		L3	SW
3S	PC-H**-9-3S-006.*	6			74	33	30	8	8	M10	18	M10	49	25	15	15	M10 x 45
	PC-H**-9-3S-006.4.*	6.4		1/4													
	PC-H**-9-3S-008.*	8		5/16													
	PC-H**-9-3S-009.5.*	9.5		3/8													
	PC-H**-9-3S-010.*	10	1/8														
	PC-H**-9-3S-012.*	12															
	PC-H**-9-3S-012.7.*	12.7		1/2													
	PC-H**-9-3S-013.5.*	13.5	1/4														
	PC-H**-9-3S-014.*	14															
	PC-H**-9-3S-015.*	15															
	PC-H**-9-3S-016.*	16		5/8													
	PC-H**-9-3S-017.2.*	17.2	3/8														
PC-H**-9-3S-018.*	18																
4S	PC-H**-9-4S-019.*	19		3/4	86	45	30	8	8	M10	18	M10	65	40	15	15	M10 x 60
	PC-H**-9-4S-020.*	20															
	PC-H**-9-4S-021.3.*	21.3	1/2														
	PC-H**-9-4S-022.*	22		7/8													
	PC-H**-9-4S-025.*	25															
	PC-H**-9-4S-025.4.*	25.4		1													
	PC-H**-9-4S-026.9.*	26.9	3/4														
	PC-H**-9-4S-028.*	28															
PC-H**-9-4S-030.*	30																
5S	PC-H**-9-5S-030.*	30			100	60	30	8	8	M10	18	M10	77	51	15	15	M10 x 70
	PC-H**-9-5S-032.*	32		1 1/4													
	PC-H**-9-5S-033.7.*	33.7	1														
	PC-H**-9-5S-035.*	35															
	PC-H**-9-5S-038.*	38		1 1/2													
	PC-H**-9-5S-040.*	40															
	PC-H**-9-5S-042.*	42	1 1/4														
6S	PC-H**-9-6S-038.*	38		1 1/2	140	90	45	10	8	M12	20	M12	110	82	18	17	M12 x 100
	PC-H**-9-6S-042.*	42	1 1/4														
	PC-H**-9-6S-044.5.*	44.5		1 3/4													
	PC-H**-9-6S-048.3.*	48.3	1 1/2														
	PC-H**-9-6S-050.8.*	50.8		2													
	PC-H**-9-6S-055.*	55															
	PC-H**-9-6S-057.*	57		2 1/4													
	PC-H**-9-6S-060.3.*	60.3	2														
	PC-H**-9-6S-063.5.*	63.5		2 1/2													
	PC-H**-9-6S-065.*	65															
PC-H**-9-6S-070.*	70		2 3/4														
7S	PC-H**-9-7S-065.*	65			180	122	60	10	12	M16	24	M16	144	110	24	21	M16 x 130
	PC-H**-9-7S-070.*	70															
	PC-H**-9-7S-073.*	73		2 7/8													
	PC-H**-9-7S-075.*	75															
	PC-H**-9-7S-076.1.*	76.1	2 1/2	3													
	PC-H**-9-7S-080.*	80															
	PC-H**-9-7S-082.5.*	82.5		3 1/4													
	PC-H**-9-7S-088.9.*	88.9	3	3 1/2													
8S	PC-H**-9-8S-088.9.*	88.9	3	3 1/2	226	168	80	15	18	M20	30	M20	200	150	30	27	M20 x 190
	PC-H**-9-8S-100.*	100															
	PC-H**-9-8S-102.*	102	3 1/2														
	PC-H**-9-8S-108.*	108		4 1/4													
	PC-H**-9-8S-114.*	114	4														
	PC-H**-9-8S-127.*	127		5													
	PC-H**-9-8S-133.*	133		5 1/4													
9S	PC-H**-9-9S-133.*	133		5 1/4	270	205	90	15	21	M24	35	M24	240	180	50	30	M24 x 220
	PC-H**-9-9S-140.*	140	5														
	PC-H**-9-9S-152.*	152		6													
	PC-H**-9-9S-159.*	159		6 1/4													
	PC-H**-9-9S-165.*	165		6 1/2													
10S	PC-H**-9-9S-168.*	168	6		340	265	120	25	21	M30	45	M30	331	256	62	46	M30 x 300
	PC-H**-9-10S-168.*	168	6														
	PC-H**-9-10S-177.8.*	177.8		7													
	PC-H**-9-10S-193.7.*	193.7		7 5/8													
	PC-H**-9-10S-216.*	216		8 1/2													
PC-H**-9-10S-219.*	219	8															