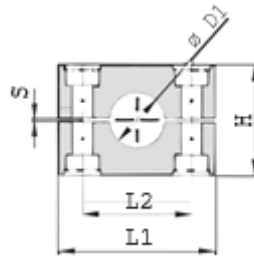
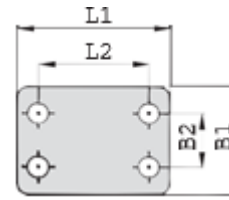


G5 HEAVY SERIES DOUBLE CLAMPS COMPLETE SET

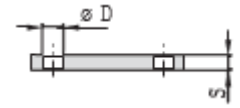
(HEX BOLTS + DOUBLE CLAMPS COVER PLATE + CLAMP BODYS + DOUBLE CLAMPS WELD PLATE)



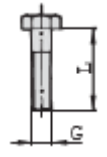
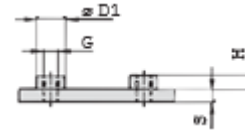
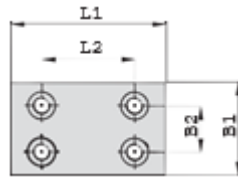
Clamp Body



Double Clamps Cover Plate



Series	Order Code	D1 Pipe O.D.	Inch Bore	Inch O.D.	Clamp Body					Double Clamps Cover Plate					
					L1	L2	H	S	B	L1	L2	B1	B2	S	D1
3S	PC-H.**-5-3S-006.*	6			55	33	30.5	0.6	30.5	55	33	60	30.5	8	11
	PC-H.**-5-3S-006.4.*	6.4		1/4											
	PC-H.**-5-3S-008.*	8		5/16											
	PC-H.**-5-3S-009.5.*	9.5		3/8											
	PC-H.**-5-3S-010.*	10	1/8												
	PC-H.**-5-3S-012.*	12													
	PC-H.**-5-3S-012.7.*	12.7		1/2											
	PC-H.**-5-3S-013.5.*	13.5	1/4												
	PC-H.**-5-3S-014.*	14													
	PC-H.**-5-3S-015.*	15													
	PC-H.**-5-3S-016.*	16		5/8											
PC-H.**-5-3S-017.2.*	17.2	3/8													
PC-H.**-5-3S-018.*	18														
PC-H.**-5-4S-019.*	19		3/4												
PC-H.**-5-4S-020.*	20														
PC-H.**-5-4S-021.3.*	21.3	1/2													
PC-H.**-5-4S-022.*	22		7/8												
PC-H.**-5-4S-025.*	25														
PC-H.**-5-4S-025.4.*	25.4		1												
PC-H.**-5-4S-026.9.*	26.9	3/4													
PC-H.**-5-4S-028.*	28														
PC-H.**-5-4S-030.*	30														
PC-H.**-5-5S-030.*	30														
PC-H.**-5-5S-032.*	32		1 1/4												
PC-H.**-5-5S-033.7.*	33.7	1													
PC-H.**-5-5S-035.*	35														
PC-H.**-5-5S-038.*	38		1 1/2												
PC-H.**-5-5S-040.*	40														
PC-H.**-5-5S-042.*	42	1 1/4													
PC-H.**-5-6S-038.*	38		1 1/2												
PC-H.**-5-6S-042.*	42	1 1/4													
PC-H.**-5-6S-044.5.*	44.5		1 3/4												
PC-H.**-5-6S-048.3.*	48.3	1 1/2													
PC-H.**-5-6S-050.8.*	50.8		2												
PC-H.**-5-6S-055.*	55														
PC-H.**-5-6S-057.*	57		2 1/4												
PC-H.**-5-6S-060.3.*	60.3	2													
PC-H.**-5-6S-063.5.*	63.5		2 1/2												
PC-H.**-5-6S-065.*	65														
PC-H.**-5-6S-070.*	70		2 3/4												
PC-H.**-5-7S-065.*	65														
PC-H.**-5-7S-070.*	70														
PC-H.**-5-7S-073.*	73		2 7/8												
PC-H.**-5-7S-075.*	75														
PC-H.**-5-7S-076.1.*	76.1	2 1/2	3												
PC-H.**-5-7S-080.*	80														
PC-H.**-5-7S-082.5.*	82.5		3 1/4												
PC-H.**-5-7S-088.9.*	88.9	3	3 1/2												
PC-H.**-5-8S-088.9.*	88.9	3	3 1/2												
PC-H.**-5-8S-100.*	100														
PC-H.**-5-8S-102.*	102	3 1/2													
PC-H.**-5-8S-108.*	108		4 1/4												
PC-H.**-5-8S-114.*	114	4													
PC-H.**-5-8S-127.*	127		5												
PC-H.**-5-8S-133.*	133		5 1/4												
PC-H.**-5-9S-133.*	133		5 1/4												
PC-H.**-5-9S-140.*	140	5													
PC-H.**-5-9S-152.*	152		6												
PC-H.**-5-9S-159.*	159		6 1/4												
PC-H.**-5-9S-165.*	165		6 1/2												
PC-H.**-5-9S-168.*	168	6													
PC-H.**-5-10S-168.*	168	6													
PC-H.**-5-10S-177.8.*	177.8		7												
PC-H.**-5-10S-193.7.*	193.7		7 5/8												
PC-H.**-5-10S-216.*	216		8 1/2												
PC-H.**-5-10S-219.*	219	8													
PC-H.**-5-11S-219.*	219	8													
PC-H.**-5-11S-273.*	273	10													
PC-H.**-5-11S-324.*	324	12													
PC-H.**-5-12S-356.*	356	14													
PC-H.**-5-12S-406.*	406	16													
					630	534	530	20	182	630	534	361	186	30	35

G5 HEAVY SERIES DOUBLE CLAMPS COMPLETE SET
(HEX BOLTS + DOUBLE CLAMPS COVER PLATE + CLAMP BODYS + DOUBLE CLAMPS WELD PLATE)

Double Clamps Weld Plate
Hex Bolt

Series	Order Code	D1 Pipe O.D.	Inch Bore	Inch O.D.	Double Clamps Weld Plate						Bolt		
					L1	L2	B1	B2	S	H		G	D1
3S	PC-H**-5-3S-006-*	6			74	33	60	30.5	8	8	M10	18	M10 x 45
	PC-H**-5-3S-006.4-*	6.4		1/4									
	PC-H**-5-3S-008-*	8		5/16									
	PC-H**-5-3S-009.5-*	9.5		3/8									
	PC-H**-5-3S-010-*	10	1/8										
	PC-H**-5-3S-012-*	12											
	PC-H**-5-3S-012.7-*	12.7		1/2									
	PC-H**-5-3S-013.5-*	13.5	1/4										
	PC-H**-5-3S-014-*	14											
	PC-H**-5-3S-015-*	15											
	PC-H**-5-3S-016-*	16		5/8									
	PC-H**-5-3S-017.2-*	17.2	3/8										
PC-H**-5-3S-018-*	18												
PC-H**-5-4S-019-*	19		3/4										
4S	PC-H**-5-4S-020-*	20			86	45	60	30.5	8	8	M10	18	M10 x 60
	PC-H**-5-4S-021.3-*	21.3	1/2										
	PC-H**-5-4S-022-*	22		7/8									
	PC-H**-5-4S-025-*	25											
	PC-H**-5-4S-025.4-*	25.4		1									
	PC-H**-5-4S-026.9-*	26.9	3/4										
	PC-H**-5-4S-028-*	28											
	PC-H**-5-4S-030-*	30											
5S	PC-H**-5-5S-030-*	30			100	60	60	30.5	8	8	M10	18	M10 x 70
	PC-H**-5-5S-032-*	32		1 1/4									
	PC-H**-5-5S-033.7-*	33.7	1										
	PC-H**-5-5S-035-*	35											
	PC-H**-5-5S-038-*	38		1 1/2									
6S	PC-H**-5-5S-040-*	40			140	90	90	46	10	8	M12	20	M12 x 100
	PC-H**-5-5S-042-*	42	1 1/4										
	PC-H**-5-6S-038-*	38		1 1/2									
	PC-H**-5-6S-042-*	42	1 1/4										
	PC-H**-5-6S-044.5-*	44.5		1 3/4									
	PC-H**-5-6S-048.3-*	48.3	1 1/2										
	PC-H**-5-6S-050.8-*	50.8		2									
	PC-H**-5-6S-055-*	55											
	PC-H**-5-6S-057-*	57		2 1/4									
	PC-H**-5-6S-060.3-*	60.3	2										
	PC-H**-5-6S-063.5-*	63.5		2 1/2									
7S	PC-H**-5-6S-065-*	65			180	122	120	61	10	12	M16	24	M16 x 130
	PC-H**-5-6S-065-*	65											
	PC-H**-5-7S-070-*	70											
	PC-H**-5-7S-073-*	73		2 7/8									
	PC-H**-5-7S-075-*	75											
	PC-H**-5-7S-076.1-*	76.1	2 1/2	3									
	PC-H**-5-7S-080-*	80											
	PC-H**-5-7S-082.5-*	82.5		3 1/4									
8S	PC-H**-5-7S-088.9-*	88.9	3	3 1/2	226	168	160	81	15	18	M20	30	M20 x 190
	PC-H**-5-8S-100-*	100											
	PC-H**-5-8S-102-*	102	3 1/2										
	PC-H**-5-8S-108-*	108		4 1/4									
	PC-H**-5-8S-114-*	114	4										
	PC-H**-5-8S-127-*	127		5									
	PC-H**-5-8S-133-*	133		5 1/4									
9S	PC-H**-5-9S-133-*	133		5 1/4	270	205	180	91	15	21	M24	35	M24 x 220
	PC-H**-5-9S-140-*	140	5										
	PC-H**-5-9S-152-*	152		6									
	PC-H**-5-9S-159-*	159		6 1/4									
	PC-H**-5-9S-165-*	165		6 1/2									
	PC-H**-5-9S-168-*	168	6										
10S	PC-H**-5-10S-168-*	168	6		340	265	240	121	25	21	M30	45	M30 x 300
	PC-H**-5-10S-177.8-*	177.8		7									
	PC-H**-5-10S-193.7-*	193.7		7 5/8									
	PC-H**-5-10S-216-*	216		8 1/2									
	PC-H**-5-10S-219-*	219	8										
11S	PC-H**-5-11S-219-*	219	8		520	395	324	166	30	38	M30	50	M30 x 450
	PC-H**-5-11S-273-*	273	10										
	PC-H**-5-11S-324-*	324	12										
12S	PC-H**-5-12S-356-*	356	14		680	534	364	186	30	38	M30	50	M30 x 560
	PC-H**-5-12S-406-*	406	16										