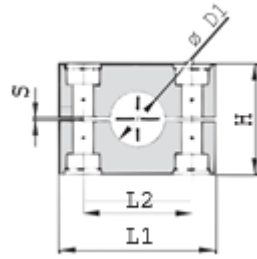
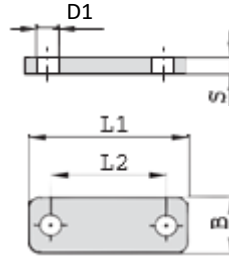
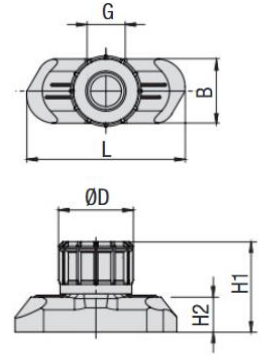


**G5 STANDARD SERIES COVER PLATE WITH RAIL NUT SET  
(CLAMP BODY + COVER PLATE + RAIL NUTS + ALLAN CAP SCREW)**

**Clamp Body**

**Cover Plate**

**Cap Screw**

**Hex Rail Nut**

Series	Order Code	D1 Pipe O.D.	Inch Bore	Inch O.D.	Clamp Body					Cover Plate			Cap Screw	Hex Rail Nut																					
					L1	L2	H	S	B	L1	L2	S		G	L	B	H1	H2	D																
1	PC-S**-6-1-006-*	6			28	9.5	26	0.4	30	28	9.5	3	M6 x 30																						
	PC-S**-6-1-006.4-*	6.4	1/4																																
	PC-S**-6-1-008-*	8	5/16																																
	PC-S**-6-1-009.5-*	9.5	3/8																																
	PC-S**-6-1-010-*	10	1/8																																
1A	PC-S**-6-1A-006-*	6			37	20	26	0.4	30	34	20	3	M6 x 30																						
	PC-S**-6-1A-006.4-*	6.4	1/4																																
	PC-S**-6-1A-008-*	8	5/16																																
	PC-S**-6-1A-009.5-*	9.5	3/8																																
	PC-S**-6-1A-010-*	10	1/8																																
	PC-S**-6-1A-012-*	12																																	
2	PC-S**-6-2-012.7-*	12.7		1/2	42	26	32	0.6	30	40.5	26	3	M6 x 35																						
	PC-S**-6-2-013.5-*	13.5	1/4																																
	PC-S**-6-2-014-*	14																																	
	PC-S**-6-2-015-*	15																																	
	PC-S**-6-2-016-*	16	5/8																																
	PC-S**-6-2-017.2-*	17.2	3/8																																
3	PC-S**-6-3-019-*	19		3/4	50	33	35.5	0.6	30	48	33	3	M6 x 40	M6	25.5	10.4	14.2	5.5	12																
	PC-S**-6-3-020-*	20																																	
	PC-S**-6-3-021.3-*	21.3	1/2																																
	PC-S**-6-3-022-*	22	7/8																																
	PC-S**-6-3-025-*	25																																	
	PC-S**-6-3-025.4-*	25.4	1																																
4	PC-S**-6-4-026.9-*	26.9		3/4	59	40	41.5	0.6	30	57	40	3	M6 x 45																						
	PC-S**-6-4-028-*	28																																	
	PC-S**-6-4-030-*	30																																	
5	PC-S**-6-5-032-*	32		1 1/4	71	52	56.5	0.8	30	70	52	3	M6 x 60																						
	PC-S**-6-5-033.7-*	33.7	1																																
	PC-S**-6-5-035-*	35																																	
	PC-S**-6-5-038-*	38	1 1/2																																
	PC-S**-6-5-040-*	40																																	
6	PC-S**-6-5-042-*	42		1 1/4	86	66	64.5	0.8	30	86	66	3	M6 x 70																						
	PC-S**-6-6-044.5-*	44.5	1 3/4																																
	PC-S**-6-6-048.3-*	48.3	1 1/2																																
	PC-S**-6-6-050.8-*	50.8	2																																
	7	PC-S**-6-7-057.2-*	57.2																	2 1/4	121	94	92	0.8	30	118	94	5	M6 x 100						
		PC-S**-6-7-060.3-*	60.3	2																															
PC-S**-6-7-063.5-*		63.5	2 1/2																																
PC-S**-6-7-070-*		70	2 3/4																																
PC-S**-6-7-073-*		73																																	
PC-S**-6-7-076.1-*		76.1	2 1/2																																
8	PC-S**-6-8-088.9-*	88.9		3	147	120	116	0.8	30	144	120	5	M6 x 125																						
	PC-S**-6-8-102-*	102	4																																