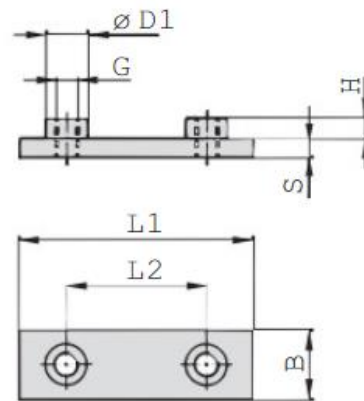


WELD PLATE (FOR HEAVY SERIES)
Type SPAL


Series	DIN	Order Code	Weld Plate						
			L1	L2	B	S	H	G	D1
3S	1	SPAL-3S-M-W2	74	33	30	8	8	M10	18
4S	2	SPAL-4S-M-W2	86	45	30	8	8	M10	18
5S	3	SPAL-4S-M-W2	100	60	30	8	8	M10	18
6S	4	SPAL-6S-M-W2	140	90	45	10	8	M12	20
7S	5	SPAL-7S-M-W2	180	122	60	10	12	M16	24
8S	6	SPAL-8S-M-W2	226	168	80	15	18	M20	30
9S	7	SPAL-9S-M-W2	270	205	90	15	21	M24	35
10S	8	SPAL-10S-M-W2	340	265	120	25	21	M30	45
11S	9	SPAL-11S-M-W2	520	395	160	30	38	M30	50
12S	10	SPAL-12S-M-W2	680	534	180	30	38	M30	50