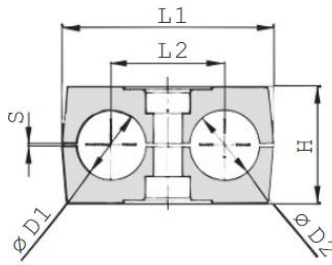
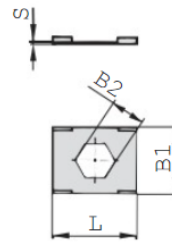
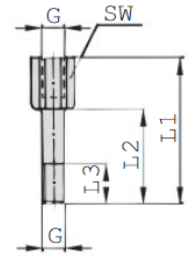


G4 TWIN SERIES DOUBLE STACK SET (STACKING BOLT + SAFETY LOCKING PLATE + CLAMP BODY)

Clamps Body

Safety Locking Plate

Stacking Bolt

Series	Order Code	D1/D2 Pipe O.D.	Inch Bore	Inch O.D.	Clamp Body					Safety Locking Plate				Stacking Bolt				
					L1	L2	H	S	B	L	B	B1	S	G	L1	L2	L3	SW
1D	PC-T**-4-1D-006.*	6/6			36	20	26.5	0.6	30	27	22	11.2	0.5	M6	34	20	12	11
	PC-T**-4-1D-006.4.*	6.4/6.4	1/4															
	PC-T**-4-1D-008.*	8/8	5/16															
	PC-T**-4-1D-009.5.*	9.5/9.5	3/8															
	PC-T**-4-1D-010.*	10/10	1/8															
PC-T**-4-1D-012.*	12/12																	
2D	PC-T**-4-2D-012.7.*	12.7/12.7		1/2	53	29	26.5	0.7	30	27	22	12.2	0.5	M8	33	20	12	12
	PC-T**-4-2D-013.5.*	13.5/13.5	1/4															
	PC-T**-4-2D-014.*	14/14																
	PC-T**-4-2D-015.*	15/15																
	PC-T**-4-2D-016.*	16/16	5/8															
	PC-T**-4-2D-017.2.*	17.2/17.2	3/8															
PC-T**-4-2D-018.*	18/18																	
3D	PC-T**-4-3D-019.*	19/19		3/4	67	36	36.5	0.7	30	27	22	12.2	0.5	M8	44	29	12	12
	PC-T**-4-3D-020.*	20/20																
	PC-T**-4-3D-021.3.*	21.3/21.3	1/2															
	PC-T**-4-3D-022.*	22/22	7/8															
	PC-T**-4-3D-025.*	25/25																
PC-T**-4-3D-025.4.*	25.4/25.4	1																
4D	PC-T**-4-4D-026.9.*	26.9/26.9		3/4	80	45	38	0.7	30	27	22	12.2	0.5	M8	49	34	12	12
	PC-T**-4-4D-028.*	28/28																
	PC-T**-4-4D-030.*	30/30																
5D	PC-T**-4-5D-032.*	32/32			106	56	52	0.7	30	27	22	12.2	0.5	M8	61	46	12	12
	PC-T**-4-5D-033.7.*	33.7/33.7																
	PC-T**-4-5D-035.*	35/35																
	PC-T**-4-5D-038.*	38/38																
	PC-T**-4-5D-040.*	40/40																
PC-T**-4-5D-042.*	42/42																	