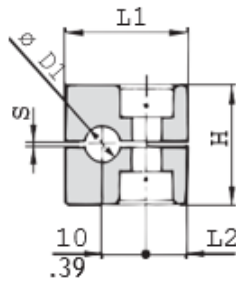
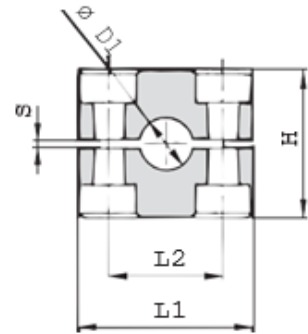


CLAMP BODY (FOR STANDARD SERIES)



Group 1



Group 1A to 8

Series	Order Code	D1 Pipe O.D.	Inch Bore	Inch O.D.	Clamp Body					
					L1	L2	H	S	B	L1
1	PC-S**-1-006-*	6			28	9.5	27	0.4	30	28
	PC-S**-1-006.4-*	6.4		1/4						
	PC-S**-1-008-*	8		5/16						
	PC-S**-1-009.5-*	9.5		3/8						
	PC-S**-1-010-*	10	1/8							
1A	PC-S**-1A-006-*	6			37	20	27	0.4	30	34
	PC-S**-1A-006.4-*	6.4		1/4						
	PC-S**-1A-008-*	8		5/16						
	PC-S**-1A-009.5-*	9.5		3/8						
	PC-S**-1A-010-*	10	1/8							
2	PC-S**-2-012.7-*	12.7		1/2	42	26	33	0.6	30	40.5
	PC-S**-2-013.5-*	13.5	1/4							
	PC-S**-2-014-*	14								
	PC-S**-2-015-*	15								
	PC-S**-2-016-*	16		5/8						
	PC-S**-2-017.2-*	17.2	3/8							
3	PC-S**-3-019-*	19		3/4	50	33	36	0.6	30	48
	PC-S**-3-020-*	20								
	PC-S**-3-021.3-*	21.3	1/2							
	PC-S**-3-022-*	22		7/8						
	PC-S**-3-025-*	25								
4	PC-S**-4-025.4-*	25.4		1	59	40	42	0.6	30	57
	PC-S**-4-026.9-*	26.9	3/4							
	PC-S**-4-028-*	28								
5	PC-S**-5-030-*	30			71	52	58	0.8	30	70
	PC-S**-5-032-*	32		1 1/4						
	PC-S**-5-033.7-*	33.7	1							
	PC-S**-5-035-*	35								
	PC-S**-5-038-*	38		1 1/2						
6	PC-S**-5-040-*	40			86	66	66	0.8	30	86
	PC-S**-5-042-*	42	1 1/4							
	PC-S**-6-044.5-*	44.5		1 3/4						
7	PC-S**-6-048.3-*	48.3	1 1/2		121	94	93	0.8	30	118
	PC-S**-6-050.8-*	50.8		2						
	PC-S**-7-057.2-*	57.2		2 1/4						
	PC-S**-7-060.3-*	60.3	2							
	PC-S**-7-063.5-*	63.5		2 1/2						
	PC-S**-7-070-*	70		2 3/4						
8	PC-S**-7-073-*	73			147	120	116	0.8	30	144
	PC-S**-7-076.1-*	76.1	2 1/2	3						
	PC-S**-8-088.9-*	88.9	3	3 1/2	147	120	116	0.8	30	144
	PC-S**-8-102-*	102		4						